

1901

ARCHITECTURAL DOWNLIGHT RANGE



COLLINGWOOD
LIGHTING





BY COLLINGWOOD LIGHTING

Over a century of design and innovation experience has led to the 1901 collection. Flexibility is at the heart of the range with over one thousand six hundred combinations of components available to create your bespoke fitting. Just-in-time assembly lines at our headquarters in Northamptonshire, England, allow us to respond to your needs at short notice.

The designers inside The Studio at Collingwood are able to offer expertise throughout the lighting design process, putting together full schemes based around our comprehensive product range. Detailed client consultation ensures a high quality and tailored service.

For inspirational architectural lighting, choose 1901.







1901
BY COLLINGWOOD
LIGHTING
3000K -90CRI



7 year extended warranty available

Made in Great Britain.

Designed and made in Great Britain at our headquarters in Northamptonshire, the 1901 range brings together over a century of innovative engineering, research and development.

High quality and reliable product design allows us to provide a seven year extended warranty, reinforced by an LED lifetime of seventy thousand hours.

All components are carefully selected and assembled by our production team, which has a wealth of experience in constructing superior downlights.

Bespoke

The 1901 range has nine configurable elements which create the finished downlight. The part code matrix makes selection simple. The available choices start with the bezel colour and move through all elements of the product, including the beam angle, IP rating, colour temperature, dimming method and more.

The result is over one thousand six hundred unique combinations, all readily available at short notice.

Features.

Easy installation spring clips

The 1901 range has been designed to be simple to install. The bezel versions are supplied with coiled spring clips, which are designed specifically for versatility and compatibility with a variety of ceiling thicknesses.

Each of the three dimmable driver options feature loop-in, loop-out terminals. This reduces installation times and also avoids the need to insert multiple wires into single terminals.

90+ CRI

This low glare luminaire benefits from a high CRI of 90+ within each of the three available colour temperatures, which enhances the appearance of textures and colour palettes.

Emergency pack options

A pre wired emergency pack is available, which provides a minimum of three hours of light output in emergency mode.

Fire rated hood

The fire hood accessory complies with Part B Fire Protection of the building regulations, guaranteeing ninety minute fire protection.



Partcode matrix.

Use the matrix below to configure the desired part code for your installation.

1	2	3	4	5
B D	B	0	0	A
	L	1	1	F
			2	
			3	
			4	

1 Product type	2 Bezel / trim colour	3 Baffle colour
B D Baffled downlight	B Matt black bezel / trim L Matt white bezel / trim	0 Matt white baffle 1 Matt black baffle
7 Beam angle	8 Dimming	9 IP rating
N Narrow M Medium W Wide	D DALI-2 M Mains V 1-10V	I IP65 - Standard version (IP20 or IP44)

6		7	8	9
2	7	N	D	I
3	0	M	M	Leave blank
4	0	W	V	

4	Style	5	Fixed / Adjustable	6	Colour temperature
0	Slim round bezel*	A	Adjustable	27	2700K
1	Round bezel	F	Fixed	30	3000K
2	Square bezel			40	4000K
3	Single trimless				
4	Double trimless				

2 Bezel / trim colour.

These discreet options are available in a choice of two colours: matt white or matt black.



Bezel



Fixed Trim



Adjustable Trim

B - Matt black bezel / trim
RAL9017



L - Matt white bezel / trim
RAL9003



B - Matt black bezel



L - Matt white bezel

3 Baffle colour.

Intelligently engineered with a stylish and sleek design our choice of baffles will create beautifully lit interior spaces.



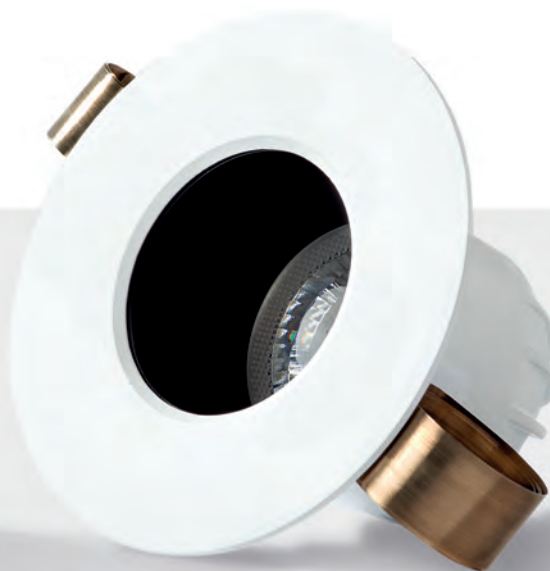
0 - Matt white baffle



1 - Matt black baffle



0 - Matt white baffle



1 - Matt black baffle

4 Style.

There are options available within both bezel and plaster-in versions.



0 - Slim round bezel*



1 - Round bezel



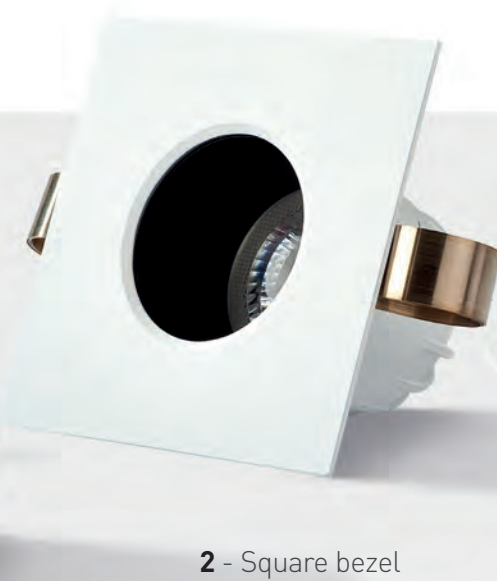
2 - Square bezel



0 - Slim round bezel*



1 - Round bezel



2 - Square bezel



3 - Single trimless



4 - Double trimless



3 - Single trimless

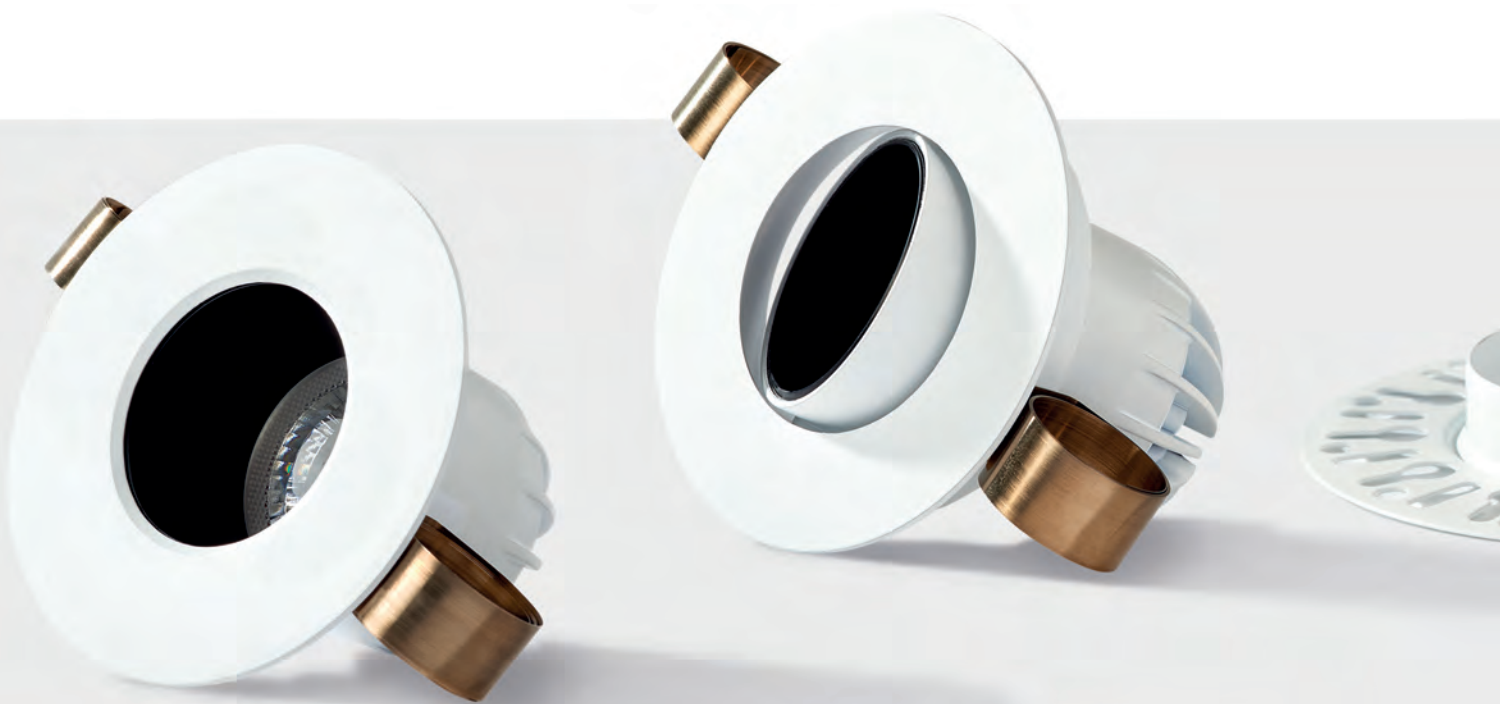
4 - Double trimless

5 Fixed or Adjustable.

The fixed position achieves a broad light distribution, whereas the 20° tilt and 360° adjustable versions can be angled to accentuate features.



F - Fixed



A - Adjustable

F - Fixed



A - Adjustable



A - Adjustable

F - Fixed

6 Colour temperature.

Choose from three colour temperatures to create the desired environment.

2700K

Create a warm ambiance, which is ideal for living rooms, entertaining spaces and bedrooms.

3000K

Create a soft yet crisper light, ideal for bathrooms and home studies where visual tasks are more common.

4000K

Create a brighter, cooler colour which feels clean, fresh and is bright enough to work underneath.



7 Beam angle.

Three options are available: narrow, medium and wide.

12°

N - Narrow

The narrow beam has a greater intensity, making it ideal for spot-lighting features and table centres.

24°

M - Medium

The medium beam provides a light which is still quite intense, good for lighting artwork or for install into high ceilings.

50°

W - Wide

The wide beam covers a larger area with less intense light and creates fewer shadows, ideal for general infill lighting.

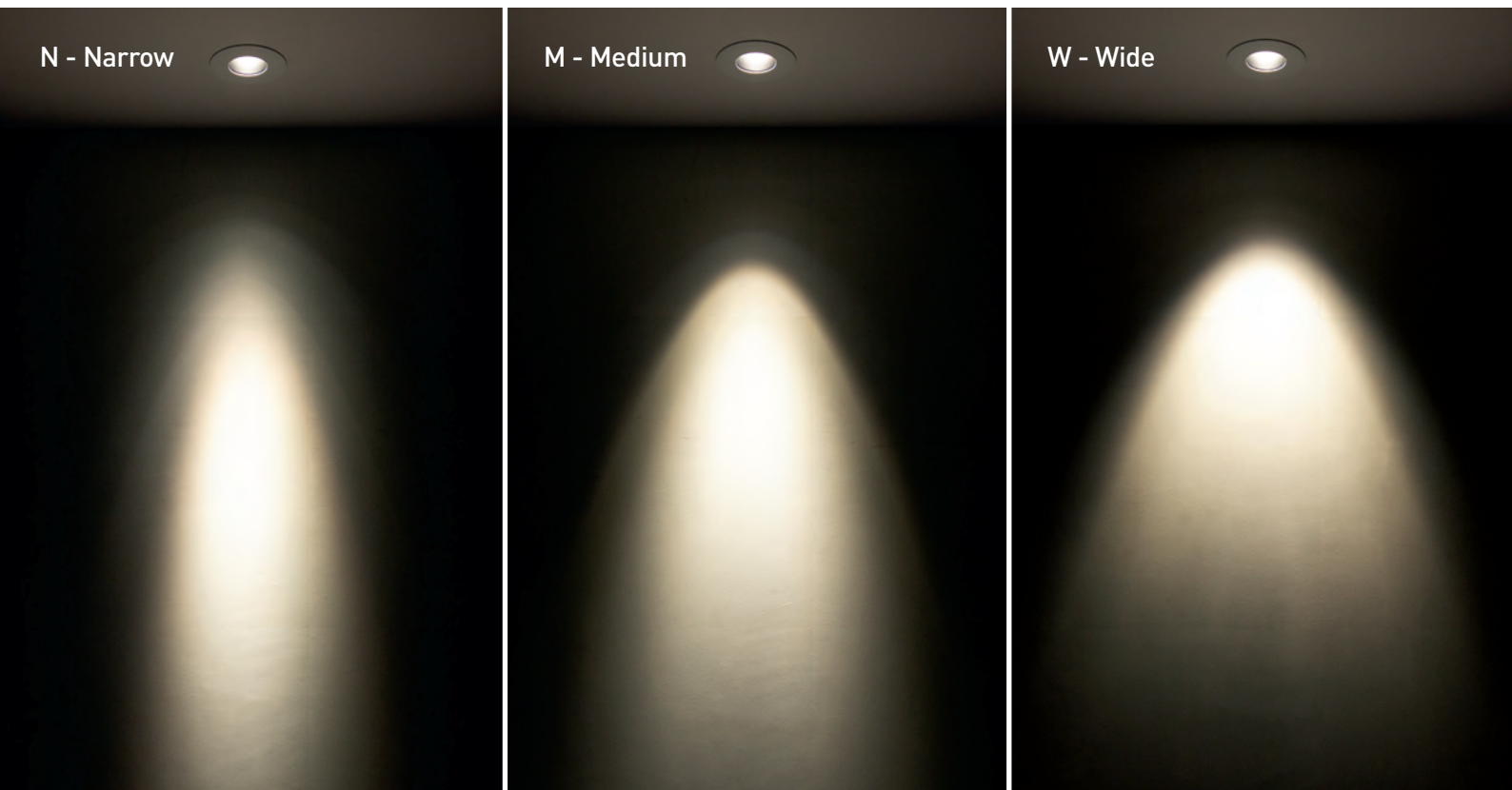
N - Narrow



M - Medium



W - Wide



8 Dimming.

Choose a suitable driver for the control preference. Plug and play connectors allow the driver to be installed first and subsequently the luminaire. All three drivers contain loop-in, loop-out terminals.



M - Mains driver

This is suitable for projects, where mains dimming is required and is both leading and trailing edge. The Collingwood Easy-fit connector is also included pre-wired.



D - DALI-2 driver

DALI-2 is the updated and improved version of the DALI lighting protocol. It allows luminaires to be controlled individually but also belong to one or more groups, increasing control flexibility and enhanced functionality.



V - 1-10V driver

This driver provides a smooth dimming curve. Up to ten power supplies can be linked to one dimmer.



Mains driver

1-10V driver

DALI-2 driver

9 IP Rating.

Three IP ratings are available depending on installation environment. The adjustable fittings are a maximum of IP20 and the fixed are either IP44 or IP65.

IP20

IP20 is suitable for indoor spaces such as living rooms, entertaining spaces and bedrooms.

IP44

The IP44 rating is suitable for bathrooms and kitchens, where water may be lightly sprayed.

IP65

The IP65 rating is recommended for bathrooms and kitchens, where there may be splashing of water.



Technical information.

Use the matrix below to generate the ideal partcode for your installation.

1901	Colour temperature	Beam angle	Finish	Wattage	CRI	Lumens	Efficacy (lm/W)	lux at 1m	IP rating
Single fitting (black baffle)	4000K	12°	Matt white (RAL9003)*	9.6W	≥90Ra	750	78	9018	Fixed available in IP65 & IP44
Single fitting (black baffle)	4000K	24°	Matt white (RAL9003)*	9.6W	≥90Ra	740	77	3595	
Single fitting (black baffle)	4000K	50°	Matt white (RAL9003)*	9.6W	≥90Ra	725	76	1318	
Single fitting (black baffle)	3000K	12°	Matt white (RAL9003)*	9.6W	≥90Ra	650	68	7816	
Single fitting (black baffle)	3000K	24°	Matt white (RAL9003)*	9.6W	≥90Ra	640	67	3191	
Single fitting (black baffle)	3000K	50°	Matt white (RAL9003)*	9.6W	≥90Ra	625	65	1136	
Single fitting (black baffle)	2700K	12°	Matt white (RAL9003)*	9.6W	≥90Ra	600	63	7214	
Single fitting (black baffle)	2700K	24°	Matt white (RAL9003)*	9.6W	≥90Ra	590	61	2866	
Single fitting (black baffle)	2700K	50°	Matt white (RAL9003)*	9.6W	≥90Ra	575	60	985	
Double fitting (black baffle)	4000K	12°	Matt white (RAL9003)*	19.2W	≥90Ra	2 x 750	78	2 x 9018	
Double fitting (black baffle)	4000K	24°	Matt white (RAL9003)*	19.2W	≥90Ra	2 x 740	77	2 x 3595	
Double fitting (black baffle)	4000K	50°	Matt white (RAL9003)*	19.2W	≥90Ra	2 x 725	76	2 x 1318	
Double fitting (black baffle)	3000K	12°	Matt white (RAL9003)*	19.2W	≥90Ra	2 x 650	68	2 x 7816	
Double fitting (black baffle)	3000K	24°	Matt white (RAL9003)*	19.2W	≥90Ra	2 x 640	67	2 x 3191	
Double fitting (black baffle)	3000K	50°	Matt white (RAL9003)*	19.2W	≥90Ra	2 x 625	65	2 x 1136	
Double fitting (black baffle)	2700K	12°	Matt white (RAL9003)*	19.2W	≥90Ra	2 x 600	63	2 x 7214	
Double fitting (black baffle)	2700K	24°	Matt white (RAL9003)*	19.2W	≥90Ra	2 x 590	61	2 x 2866	
Double fitting (black baffle)	2700K	50°	Matt white (RAL9003)*	19.2W	≥90Ra	2 x 575	60	2 x 985	
Single fitting (white baffle)	4000K	12°	Matt white (RAL9003)*	9.6W	≥90Ra	750	78	9018	Adjustable available in IP20
Single fitting (white baffle)	4000K	24°	Matt white (RAL9003)*	9.6W	≥90Ra	740	77	3595	
Single fitting (white baffle)	4000K	50°	Matt white (RAL9003)*	9.6W	≥90Ra	725	76	1318	
Single fitting (white baffle)	3000K	12°	Matt white (RAL9003)*	9.6W	≥90Ra	650	68	7816	
Single fitting (white baffle)	3000K	24°	Matt white (RAL9003)*	9.6W	≥90Ra	640	67	3191	
Single fitting (white baffle)	3000K	50°	Matt white (RAL9003)*	9.6W	≥90Ra	625	65	1136	
Single fitting (white baffle)	2700K	12°	Matt white (RAL9003)*	9.6W	≥90Ra	600	63	7214	
Single fitting (white baffle)	2700K	24°	Matt white (RAL9003)*	9.6W	≥90Ra	590	61	2866	
Single fitting (white baffle)	2700K	50°	Matt white (RAL9003)*	9.6W	≥90Ra	575	60	985	
Double fitting (white baffle)	4000K	12°	Matt white (RAL9003)*	19.2W	≥90Ra	2 x 750	78	2 x 9018	
Double fitting (white baffle)	4000K	24°	Matt white (RAL9003)*	19.2W	≥90Ra	2 x 740	77	2 x 3595	
Double fitting (white baffle)	4000K	50°	Matt white (RAL9003)*	19.2W	≥90Ra	2 x 725	76	2 x 1318	
Double fitting (white baffle)	3000K	12°	Matt white (RAL9003)*	19.2W	≥90Ra	2 x 650	68	2 x 7816	
Double fitting (white baffle)	3000K	24°	Matt white (RAL9003)*	19.2W	≥90Ra	2 x 640	67	2 x 3191	
Double fitting (white baffle)	3000K	50°	Matt white (RAL9003)*	19.2W	≥90Ra	2 x 625	65	2 x 1136	
Double fitting (white baffle)	2700K	12°	Matt white (RAL9003)*	19.2W	≥90Ra	2 x 600	63	2 x 7214	
Double fitting (white baffle)	2700K	24°	Matt white (RAL9003)*	19.2W	≥90Ra	2 x 590	61	2 x 2866	
Double fitting (white baffle)	2700K	50°	Matt white (RAL9003)*	19.2W	≥90Ra	2 x 575	60	2 x 985	

*Fixed & Adjustable options available in matt black (RAL9017)



Dimming	Adjustable	Cut-out	LED lifetime	Insulation coverable	Install connector type	Inrush current	SELV	Building regulations	Emergency version	Warranty
Available in Mains, DALI-2, 1-10V dimmable	Available in fixed & adjustable (20° tiltable and 360° rotatable)	Slim Round Fixed Ø65-70mm	70,000 hours (L70, B10)	Not insulation coverable	Plug & play	Mains 2.6A 0.3ms DALI 20A 17µs 1-10V 10A 22µs	Yes 36V	IP44 and IP65 Part B, C, E, P & L IP20 Part B, P & L (Part B only if firehood accessory used) Partcode: BDLFH1	Emergency version available Call 01604 495 151 for more information	7 year extended warranty
		Round Fixed Ø68-86mm								
		Square Fixed Ø68-86mm								
		Round Adjustable Ø76-78mm								
		Square Adjustable Ø76-78mm								
		Single Trimless Ø68-86mm								
		Double Trimless Ø68-86mm x 2								

Collingwood Lighting

Brooklands House, Sywell Aerodrome
Sywell Northampton, NN6 0BT

t +44 (0) 1604 495 151

f +44 (0) 1604 495 095

e sales@collingwoodgroup.com

w collingwoodlighting.com

Published February 2020



Join Collingwood Lighting on social media



MKT 1051 V1